



The spectacular view of Amsterdam makes this roof garden a very special place.

### Project Data

Area: ca. 500 m<sup>2</sup>

Construction Year: 2018

Landscape Architect:  
MXT Landschappen, Haarlem

Owner:  
Aedes Real Estate, Amsterdam

System Build-up:  
"Stormwater Management Roof"  
with Retention Spacer RSX 65

Coordinates:  
52°22'19.10"N    4°53'20.75"E

### Conception

The former Amsterdam 'Bunghuis' is an impressive building dating back to 1934. It had been hosting parts of the University of Amsterdam until 2018 when it was completely renovated and became an exclusive club/hotel.

The 'Soho House', as it is called now, includes a used rooftop with a bar, an outdoor swimming pool, lush planting beds and a splendid view of the city skyline. It is one of the first buildings fulfilling Amsterdam's ambitious aims of relieving the local sewer system after heavy

rainfalls by retaining 60 mm of rainwater at least for an hour.

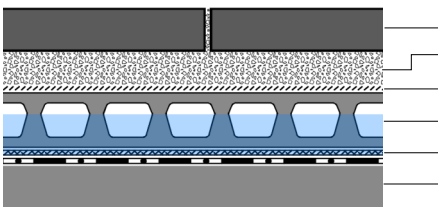
The roof consists of several sections with different levels. The system build-up "Stormwater Management Roof" is located the lower levelled roof parts and can temporarily store more than 50,000 litres of rainwater.

The vegetation in the aluminium planters close to the roof edge has been carefully chosen to thrive in the special roof conditions.

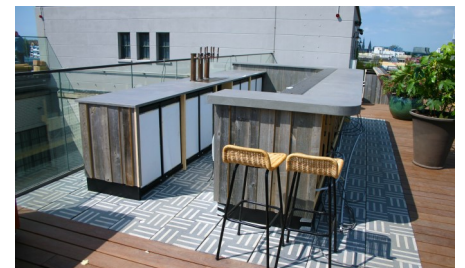


Comfortable lounge furniture and deckchairs invite visitors to stay and enjoy the roof.

### System Build-up

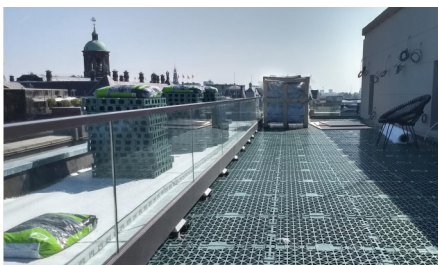


- Slabs
- Bedding material
- Filter Sheet PV
- Retention Spacer RSX 65
- Protection Mat SSM 45
- Roof construction with root resistant waterproofing

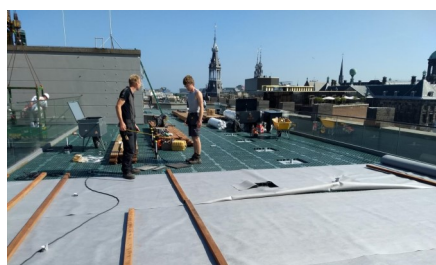


The bar is built on stylish slabs with a grey and white pattern.

### Development



The RSX 65 spacer elements are placed on top of the Protection Mat SSM 45.



The Filter Sheet PV prevents fine particles from being washed out into the spacer elements.



The Run-off Limiter Set is installed above the roof drain.

